

## • TALL FESCUE •

### Of note...

1. Old varieties such as 'Kentucky 31' are still used as utility turf, but are NOT appropriate for fine turf areas.
2. Improved turf-type varieties (finer texture, better traffic tolerance, darker green) have led to increased use in home lawns, school grounds and athletic fields.
3. Tall fescue is more shade tolerant than bluegrass or ryegrass, but not as tolerant as the fine fescues.
4. Thatching tendency is low.



Turf-type tall fescue (*Festuca arundinacea*) is a bunch-type grass with good heat and drought tolerance. The ability to persist under drought conditions and remain green when other cool-season grasses are dormant and brown is dependent on development of a

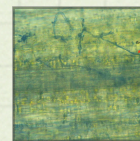
deep root system. Properly established, tall fescue has an extensive root system, especially in well-drained soils. It is tolerant of wear and has become a popular choice for athletic fields and other sites where fertilizer and irrigation inputs are limited.



## Tall Fescue Characteristics



**BUNCH TYPE GROWTH:** Tall fescue does not produce significant lateral growth (rhizomes or stolons), but rather spreads from the base with tillers.

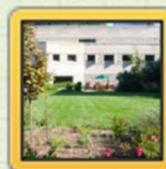




## Tall Fescue Characteristics

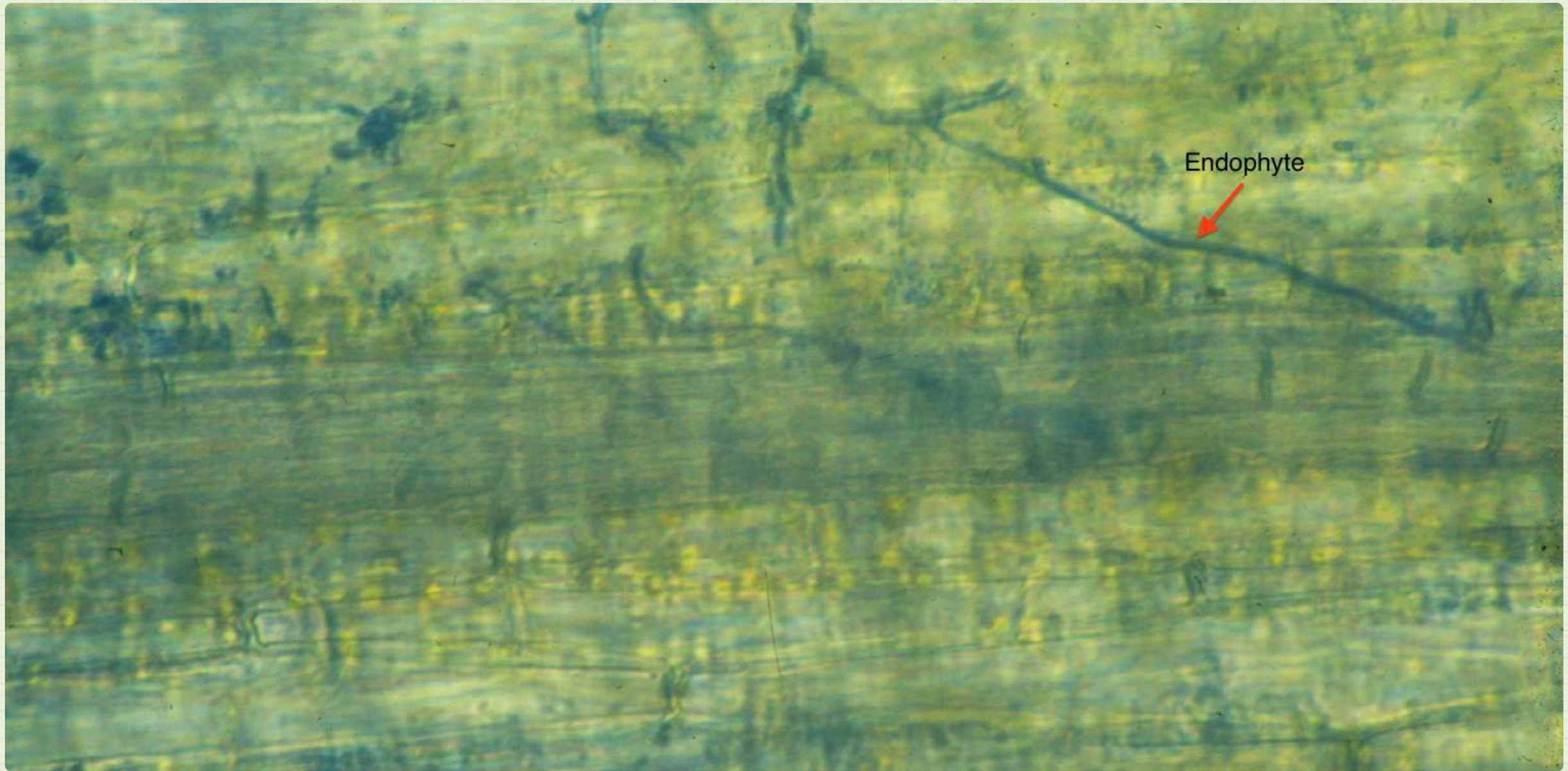


**DEEP-ROOTED:** Properly established tall fescue develops an exceptionally deep root system that allows it to persist under drought conditions, often without dormancy. Consider where irrigation is not an option.

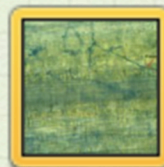




## Tall Fescue Characteristics



**ENDOPHYTE:** Most tall fescue varieties contain endophytic fungi. These beneficial fungi live in the leaf sheath and produce chemicals that deter surface-feeding insects such as sod webworm and chinch bugs. Endophytes have no effect on white grubs or other subsurface feeders.

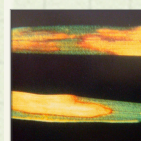




## Tall Fescue Common Concerns

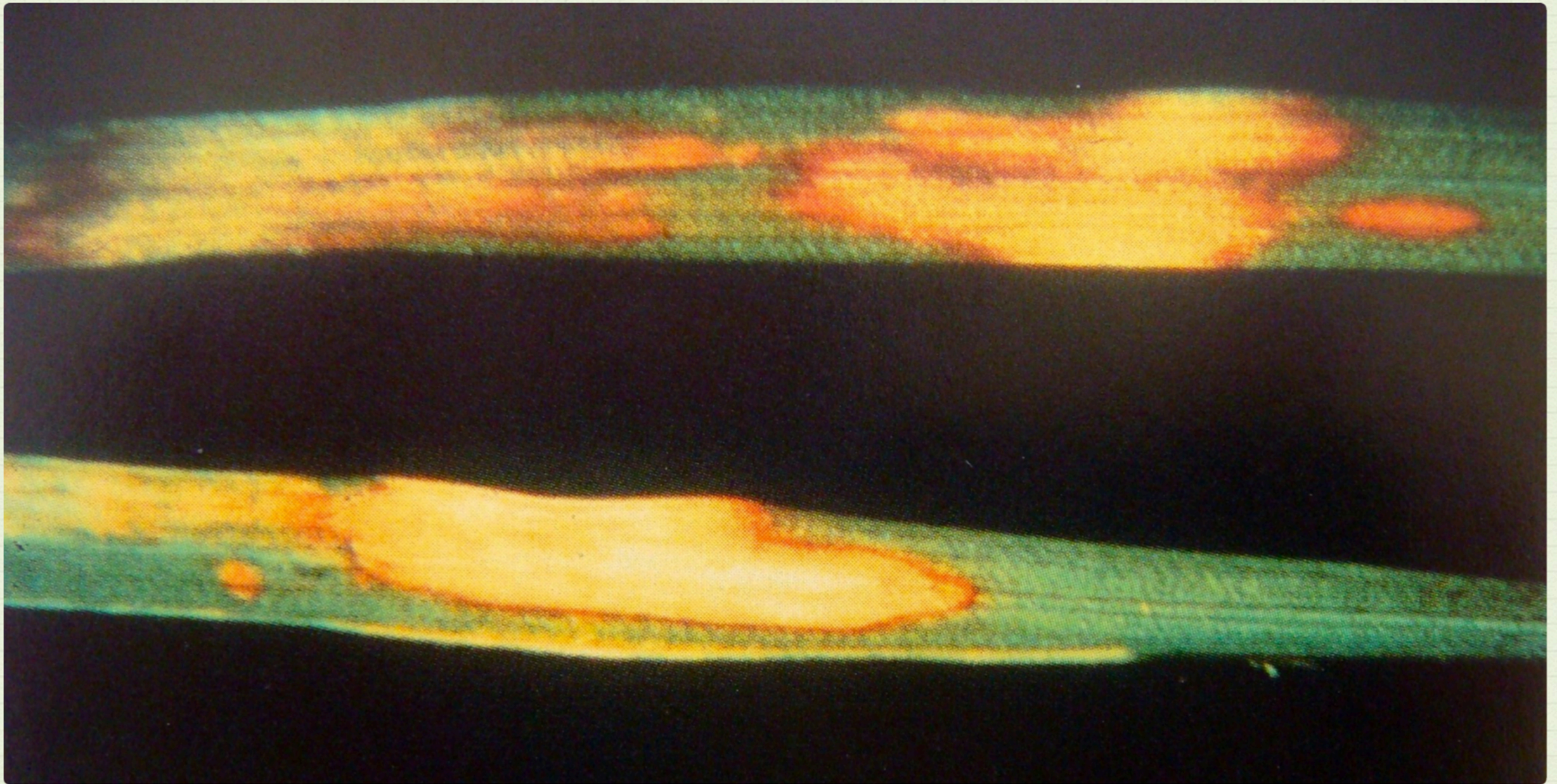


**OVERSEEDING:** *Tall fescue is tolerant of wear and has become a popular choice for athletic fields. However, it does not have significant rhizome or stolon growth and regular overseeding is required to maintain density.*

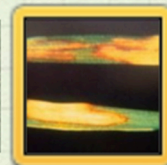




## Tall Fescue Common Concerns



**DISEASES:** *Favored under warm, humid conditions that promote prolonged leaf wetness, the most serious disease problem for tall fescue is brown patch. Resistant varieties are available.*

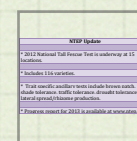
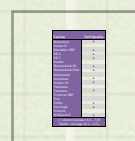




## Tall Fescue Varieties (in alphabetical order)

Variety	Turf Quality
3 <sup>rd</sup> Millennium SRP	
Blade Runner II	
Braveheart	
Bullseye	+
Cannavaro	+
Catalyst	+
Cochise IV	+
Essential	+
Faith	+
Falcon V	+
Finelawn XPress	
Firecracker LS	+
Firenza	
Garrison	
Greenbrooks	
Hemi	+
Jamboree	+
LS 1200	+
Monet	+
+ = above average (6.6 – 7.0) blank = average (6.1 – 6.5)	

**Table 9a:** Compiled from NTEP 2006 Tall Fescue Final Report at four locations in the Northeast Region (data from 2007 - 2011).





### Tall Fescue Varieties (in alphabetical order)

Variety	Turf Quality
Mustang 4	+
Raptor II	
Rhambler SRP	+
RK 4	+
RK 5	+
Rocket	
Shenandoah III	+
Shenandoah Elite	+
Sidewinder	
Speedway	+
Spyder LS	+
Talladega	
Tanzania	+
Traverse SRP	
Trio	
Turbo	+
Van Gogh	+
Venture	
Wolfpack II	+
+ = above average (6.6 – 7.0) blank = average (6.1 – 6.5)	

**Table 9b:** Compiled from NTEP 2006 Tall Fescue Final Report at four locations in the Northeast Region (data from 2007 - 2011).





## Tall Fescue Varieties (in alphabetical order)

### NTEP Update

\* 2012 National Tall Fescue Test is underway at 15 locations.

\* Includes 116 varieties.

\* Trait specific ancillary tests include brown patch, shade tolerance, traffic tolerance, drought tolerance and lateral spread/rhizome production.

\* Progress report for 2013 is available at [www.ntep.org](http://www.ntep.org)

