

## • PERENNIAL RYEGRASS •

Of note...

1. Rapid germination and establishment is an advantageous characteristic when quick cover is needed.
2. More wear tolerant than Kentucky bluegrass, but less competitive where traffic damage leaves open spaces. Regular overseeding necessary in such situations.
3. Thatch accumulation is not a problem.
4. Regenerating perennial ryegrass, or RPR, is a subspecies of perennial ryegrass which produces short stolons and may improve traffic tolerance.



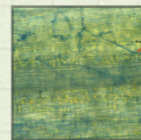
Perennial ryegrass (*Lolium perenne*) is a popular component of seed mixes for home lawns, athletic fields and golf courses. The most notable reason for the widespread use is its rapid establishment rate. Under good growing conditions and proper care, seed germinates in three to four days and can provide a

uniform cover in as little as two weeks. It is a bunch type grass that does not produce lateral growth in the form of rhizomes or stolons, but rather spreads from the base with tillers. It is most successful in full sun, well-drained fertile sites that receive regular mowing and fertilization.

## Perennial Ryegrass Characteristics



***BUNCH TYPE GROWTH:*** Does not produce lateral growth (rhizomes or stolons), but rather spreads from the base with tillers producing clumps of grass that will eventually fill in the area.



## Perennial Ryegrass Characteristics



***FAST ESTABLISHMENT RATE:*** Rapid germination and establishment make perennial ryegrass a popular component of seed mixes and for overseeding athletic fields.



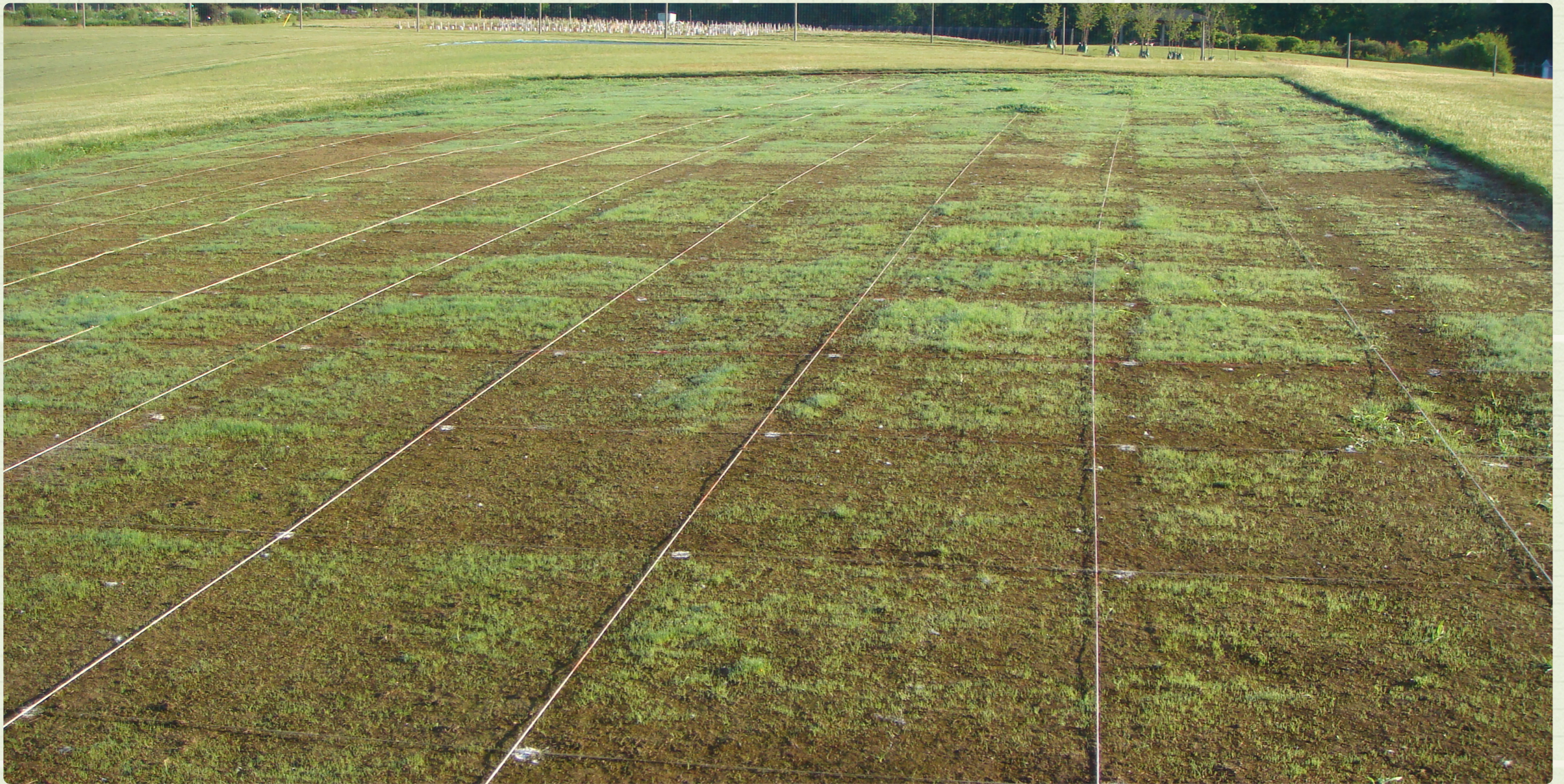
## Perennial Ryegrass Characteristics



**ENDOPHYTE:** Most varieties of perennial ryegrass contain endophytic fungi. These beneficial fungi live in the leaf sheath and produce chemicals that deter surface-feeding insects such as chinch bugs and sod webworm. They have no effect on white grubs or other subsurface feeders.



## Perennial Ryegrass Common Concerns



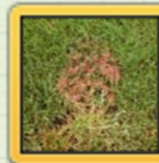
**PERCENTAGE IN MIX:** Because it germinates and establishes quickly, perennial ryegrass will overwhelm other species if there is too much in the mix. Mixes with more than 10-20% perennial ryegrass seed, by weight, are likely to result in a stand that is mostly perennial ryegrass.



## Perennial Ryegrass Common Concerns



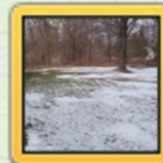
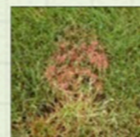
***DISEASES:*** Perennial ryegrass suffers from its fair share of diseases such as red thread (shown here), pythium blight and gray leafspot. Resistant varieties are available.



## Perennial Ryegrass Common Concerns



**COLD HARDINESS:** *Winter injury of perennial ryegrass can be a problem, particularly if there are long periods without snow cover.*



Perennial Ryegrass Varieties (in alphabetical order)

Variety	Turf Quality	LOW/MEDIUM/HIGH INPUT
1G Squared	+	
Accent II		
Allstar 3	+	<b>NOTES:</b> Data combined for seven locations in the Northeast Region.
Amazing GS	+	
Apple GL	+	
ASP6001		
ASP6002		
ASP6003		
ASP6004		
ASP6005		
ASP6006		
Attribute	+	
Baccarat		
Brightstar SLT		
Buena Vista		
Cabo II		
Calypso 3		
Charismatic II GLSR		
Citation Fore		
Cutter II		
Dart		

+ = above average (5.9 - 6.3)  
blank = average (5.4 - 5.8)

**Table 7a:** Compiled from NTEP 2004 Perennial Ryegrass Final Report (data from 2005 - 2009).





Perennial Ryegrass Varieties (in alphabetical order)

Variety	Turf Quality	LOW/MEDIUM/HIGH INPUT
Dasher 3	+	
Defender		
Delaware XL		<b>NOTES:</b>
Derby Xtreme	+	
Edge II		Data combined for seven locations in the Northeast Region.
Exacta II GLSR	+	
Fiesta 4	+	
Fiji		
Firebolt		
Fusion		
Grand Slam 2	+	
Gray Fox		
Gray Star		
Halo		
Harrier		
Hawkeye 2		
Homerun	+	
Inspire		
Keystone 2	+	
Kokomo II	+	
+ = above average (5.9 - 6.3) blank = average (5.4 - 5.8)		

**Table 7b:** Compiled from NTEP 2004 Perennial Ryegrass Final Report (data from 2005 - 2009).



Perennial Ryegrass Varieties (in alphabetical order)

Variety	Turf Quality	LOW/MEDIUM/HIGH INPUT
Line Drive GLS		
Mach I		
Majesty II		<b>NOTES:</b>
Manhattan 5 GLR		
Nexus XD		Data combined for seven locations in the Northeast Region.
Nexus XR		
Notable		
Overdrive		
Pacesetter II		
Palace	+	
Palmer IV	+	
Palmer V	+	
Panther GLS		
Paragon GLR		
Pentium		
Phenom		
Pinnacle II		
Pizzazz		
Plateau		
Pleasure Supreme		
+ = above average (5.9 - 6.3) blank = average (5.4 - 5.8)		

**Table 7c:** Compiled from NTEP 2004 Perennial Ryegrass Final Report (data from 2005 - 2009).



Perennial Ryegrass Varieties (in alphabetical order)

Variety	Turf Quality	LOW/MEDIUM/HIGH INPUT
Presidio		
Primary	+	
Protégé GLR	+	<b>NOTES:</b>
Prototype		
Quicksilver		Data combined for seven locations in the Northeast Region.
Regal 5	+	
Repell GLS		
Revenge GLX	+	
Ringer II		
Secretariat II GLSR		
Silver Dollar	+	
Soprano		
SR 4600	+	
Stellar GL		
Top Gun II		
Transformer	+	
Uno	+	
Wayfarer		
Wind Dance 2		
Zoom	+	
+ = above average (5.9 - 6.3) blank = average (5.4 - 5.8)		

**Table 7d:** Compiled from NTEP 2004 Perennial Ryegrass Final Report (data from 2005 - 2009).



Perennial Ryegrass Varieties (in alphabetical order)

## NTEP Update

\* 2010 National Perennial Ryegrass Test is underway at 15 locations.

\* Includes 88 varieties.

\* Trait specific ancillary tests include traffic tolerance and drought tolerance.

\* Progress report for 2013 is available at [www.ntep.org](http://www.ntep.org)

